

## SECTION B

# CASAPPA HAND PUMPS



**“Casappa Hand Pumps”** are a series of double acting hand pumps providing flow in both directions of the lever movement.

**Modular design** - One of the primary characteristics of the new series of **“Casappa Hand Pumps”** is the modular design of the unit. The modular design of the pumping groups, reservoirs and accessories allow the flexibility to configure the hand pump assembly required for the application.

**All pumping groups** shown in the following pages can be mounted on a common support or on the reservoirs. The pumping groups are furnished with the screws and a gasket for sealing to the support or the reservoir.

**NB: To obtain the total price ADD “Pump Unit” + “Reservoir” + “Handle”**

## EP(S) Hand Pumps

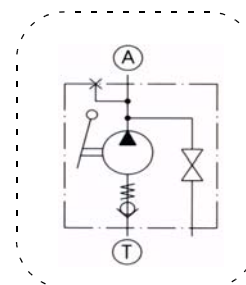
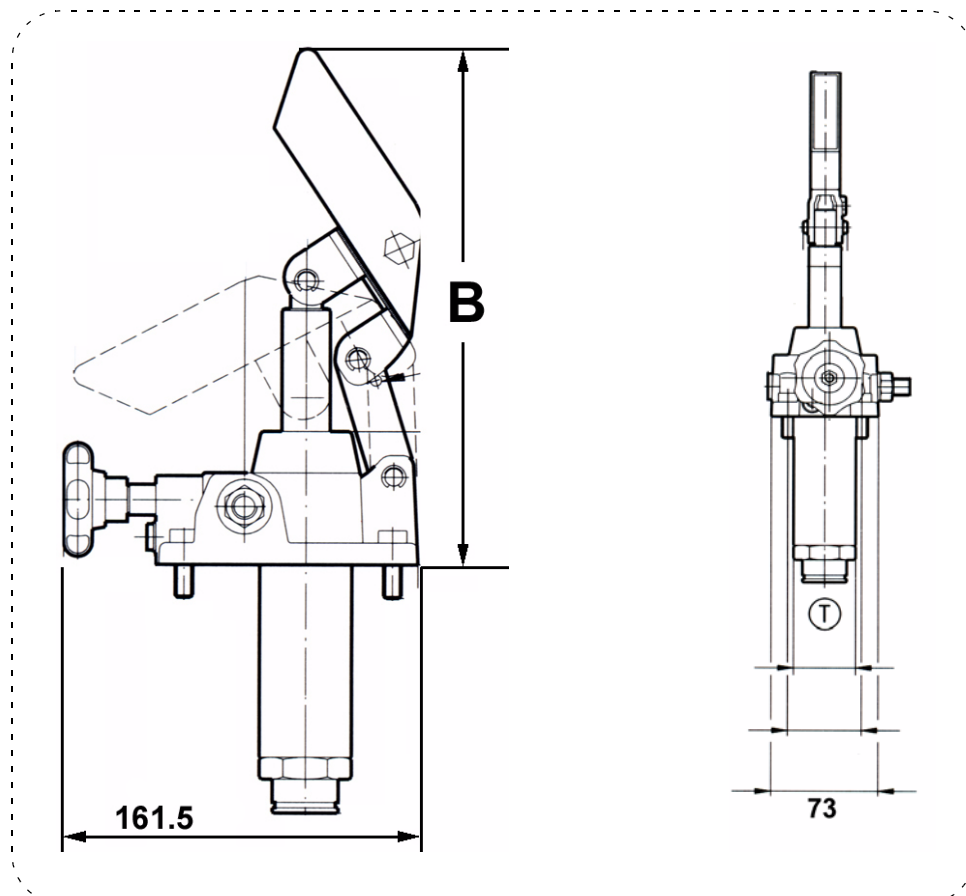
- \* Single direction units.
- \* New interchangeable modular design for maximum flexibility.
- \* Same pumping group with or without reservoir.
- \* Suitable for auxiliary or emergency applications.



Pump Unit with Built-in shutoff / release valve.

MODEL	Displacement	Max. Pressure	B	Weight	LIST PRICE
	(cc/cycle)	(BAR)	mm	kg	
EP12S	12	315	219	3,40	\$POA
EP25S	25	250	229	3,40	\$POA
EP45S	45	220	237	3,70	\$POA

NB: To obtain total price ADD Pump Unit + Reservoir + Handle



## EP(D) HAND PUMPS

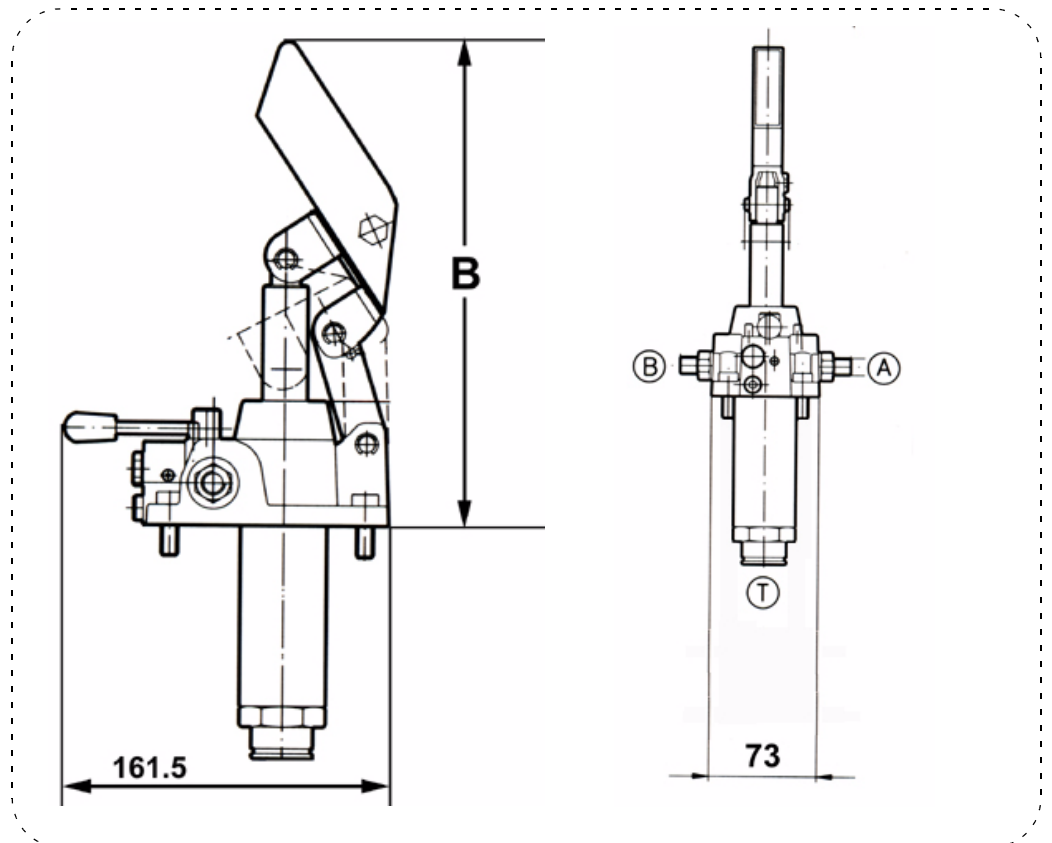
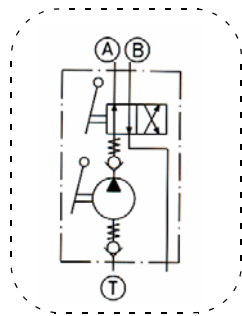


- \* Dual direction units.
- \* New interchangeable modular design for maximum flexibility.
- \* Same pumping group with or without reservoir.
- \* Suitable for auxiliary or emergency applications.

Pump Unit with Built-in shutoff / release valve.

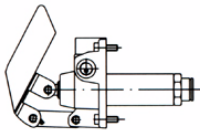

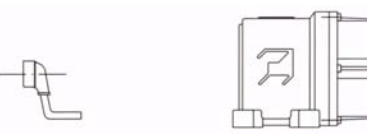
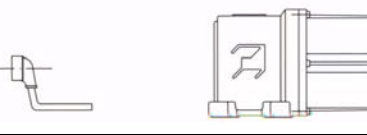
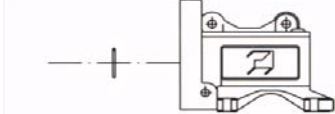
MODEL	Displacement	Max. Pressure	B	Weight	LIST PRICE
	(cc/cycle)	(BAR)	mm	kg	
EP12D	12	315	219	3,50	\$POA
EP25D	25	250	229	3,50	\$POA
EP45D	45	220	237	3,80	\$POA

NB: To obtain total price ADD Pump Unit + Reservoir + Handle

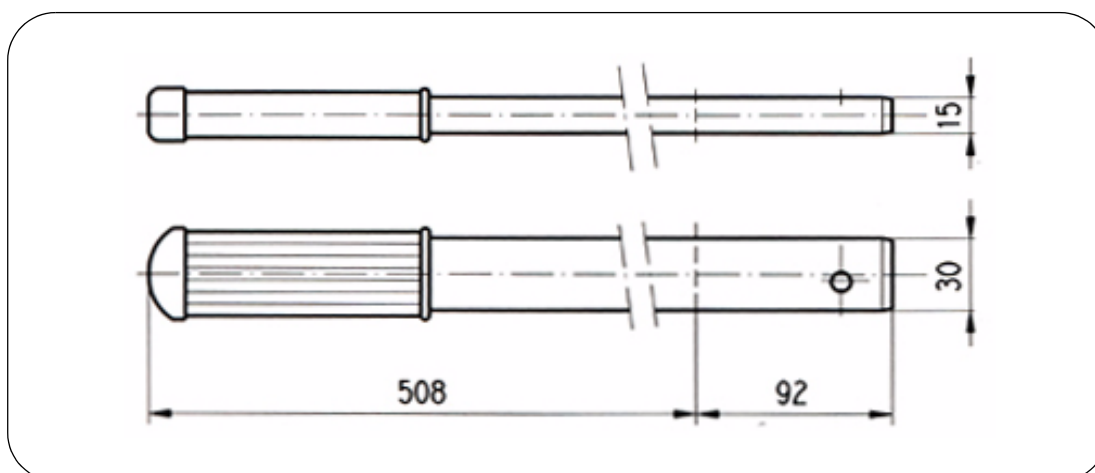


## HAND PUMP RESERVOIR KITS

**NB: Reservoir kits are supplied complete with suction tube**

PUMPING GROUP	TANK	DESCRIPTION	MODEL	LIST PRICE
		2 Litre Reservoir	T2P	\$POA
		3 Litre Reservoir	T3P	\$POA
		5 Litre Reservoir	T5P	\$POA
		<b>No Reservoir SUPPORT</b> <b>NB: Draw from separate reservoir</b>	TOA	\$POA

## HAND LEVER



MODEL	LIST PRICE
06004390	\$POA