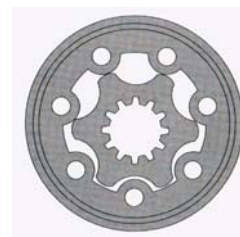


# SECTION D

## MAXMA TORQMOTORS

PAGE DESCRIPTION	PAGE
MAP SERIES - GEROTER TYPE.....	D 19
MAR SERIES - GEROLOR TYPE .....	D 20
MAS SERIES - GEROLOR TYPE .....	D 22
MAT SERIES - GEROLOR TYPE .....	D 24
MAV SERIES - GEROLOR TYPE .....	D 26

# MAP SERIES - GEROTER TYPE

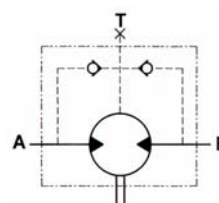


### Features:

The MAP Series are GEROTOR type 'Low Speed High Torque' Torq motors. Their compact design delivers high output torque for a small frame unit at an economical price.

These Torq motors are suitable for such applications as:

- Conveyor drives
- Winches
- Agricultural machinery
- Forestry machinery
- Cranes
- Sawmill equipment
- Elevators



SAE 'A' 2 BOLT MOUNT / 1" KEYED SHAFT	
MODEL	PRICE
MAP-50-A-CO	\$POA
MAP-80-A-CO	\$POA
MAP-100-A-CO	\$POA
MAP-125-A-CO	\$POA
MAP-160-A-CO	\$POA
MAP-200-A-CO	\$POA
MAP-250-A-CO	\$POA
MAP-315-A-CO	\$POA
MAP-400-A-CO	\$POA

SQUARE MOUNT 4 BOLT / 1" KEYED SHAFT	
MODEL	PRICE
MAP-50-Q-CO	\$POA
MAP-80-Q-CO	\$POA
MAP-100-Q-CO	\$POA
MAP-125-Q-CO	\$POA
MAP-160-Q-CO	\$POA
MAP-200-Q-CO	\$POA
MAP-250-Q-CO	\$POA
MAP-315-Q-CO	\$POA
MAP-400-Q-CO	\$POA

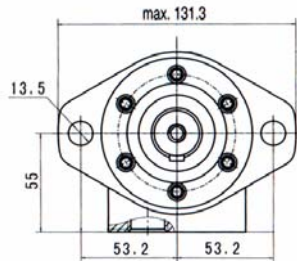
The Above Options are our stock lines, other Shaft and mount option are available by conversion or for quantity purchase ex the factory.

### PERFORMANCE FIGURES

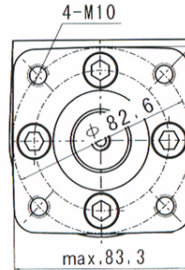
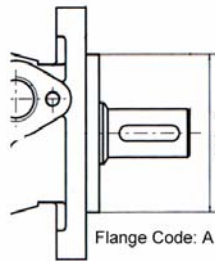
SEAL KIT	
MODEL	PRICE
SK-MAP	\$POA

MODEL	DISP CC/ REV	PRESSURE BAR		FLOW L/MIN		TORQUE				SPEED RPM		WEIGHT Kg
		CONT.	INT.	CONT.	INT.	NM		IN/LBS		CONT.	INT.	
						CONT.	INT.	CONT.	INT.			
MAP-50	51	135	165	50	60	93	107	820	944	1050	1250	5.6
MAP-80	79	135	165	60	75	144	165	1272	1464	760	940	5.7
MAP-100	99	135	165	60	75	180	207	1592	1831	605	750	5.9
MAP-125	123	135	165	60	75	225	259	1994	2294	485	600	6
MAP-160	158	135	165	60	75	289	333	2561	2946	380	475	6.2
MAP-200	197	120	165	60	75	321	415	2840	3676	302	380	6.4
MAP-250	247	105	140	60	75	351	441	3108	3901	240	302	6.6
MAP-315	316	75	125	60	75	321	503	2839	4454	190	235	6.9
MAP-400	396	60	100	60	75	322	504	2845	4463	150	190	7.4

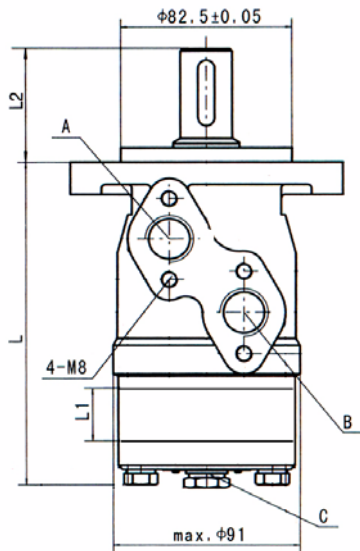
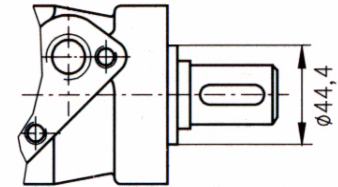
## MAP SERIES - GEROTER TYPE



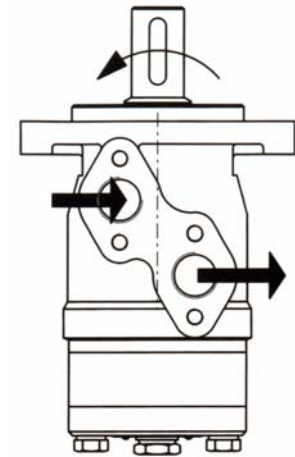
Mount Code: A



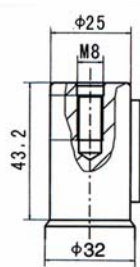
Mount Code: Q



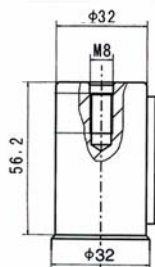
DIMENSIONS		
MODEL	L mm	L1 mm
MAP-50	137	7
MAP-80	140.5	10.5
MAP-100	143	13
MAP-125	146	16
MAP-160	151	21
MAP-200	157	26
MAP-250	162	32
MAP-315	172	42
MAP-400	182	52



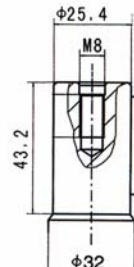
Ports A & B = 1/2"BSPP  
 Drain Port T = 1/4"BSPP  
 "Case Drain required for Series connection"



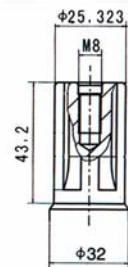
Shaft A: Cylindrical shaft  $\phi 25$   
 Parallel key 8x7x32  
 Shaft Code : C



Shaft B: Cylindrical shaft  $\phi 32$   
 Parallel key 10x8x45  
 Shaft Code : CB



Shaft C: Cylindrical shaft  $\phi 25.4$   
 Parallel key 6.35x6.35x31.75  
 Shaft Code : CO

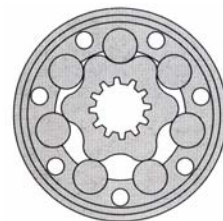


Shaft E: Splined SAE 6B  
 Shaft Code : SH

NB:

- 1/ Intermittent operation values may occur for Max 10% of every minute.
- 2/ Intermittent speed and intermittent pressure may not occur at the same time.
- 3/ Recommended filtration to **ISO 4406:1999 Cleanliness Code 19/17/14**.
- 4/ Recommended operation temperature range is 20°C to 60°C with a max of 80°C for brief periods.
- 5/ To assure optimum motor life, fill with fluid prior to loading and run for 15 mins at moderate load and speed.
- 6/ The hydraulic fluid must be a Premium quality mineral based oil with anti wear additives.

## MAR SERIES - GEROLOR TYPE

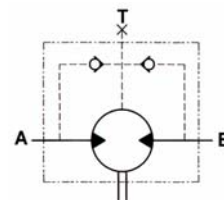


### Features:

The MAR Series are GEROLOR type 'Low Speed High Torque' Tor q m o t o r s. The GEROLOR design provides extended life for medium duty applications.

These Tor q m o t o r s are suitable for such applications as:

- Conveyor drives
- Winches
- Agricultural machinery
- Forestry machinery
- Cranes
- Sawmill equipment
- Elevators



### SAE 'A' 2 BOLT MOUNT / 1" KEYED SHAFT

MODEL	PRICE
MAR-50-A-C0	\$POA
MAR-80-A-C0	\$POA
MAR-100-A-C0	\$POA
MAR-125-A-C0	\$POA
MAR-160-A-C0	\$POA
MAR-200-A-C0	\$POA
MAR-250-A-C0	\$POA
MAR-315-A-C0	\$POA
MAR-400-A-C0	\$POA

### SQUARE MOUNT 4 BOLT / 1" KEYED SHAFT

MODEL	PRICE
MAR-50-Q-C0	\$POA
MAR-80-Q-C0	\$POA
MAR-100-Q-C0	\$POA
MAR-125-Q-C0	\$POA
MAR-160-Q-C0	\$POA
MAR-200-Q-C0	\$POA
MAR-250-Q-C0	\$POA
MAR-315-Q-C0	\$POA
MAR-400-Q-C0	\$POA

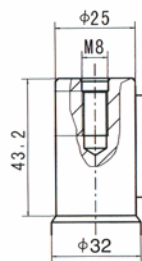
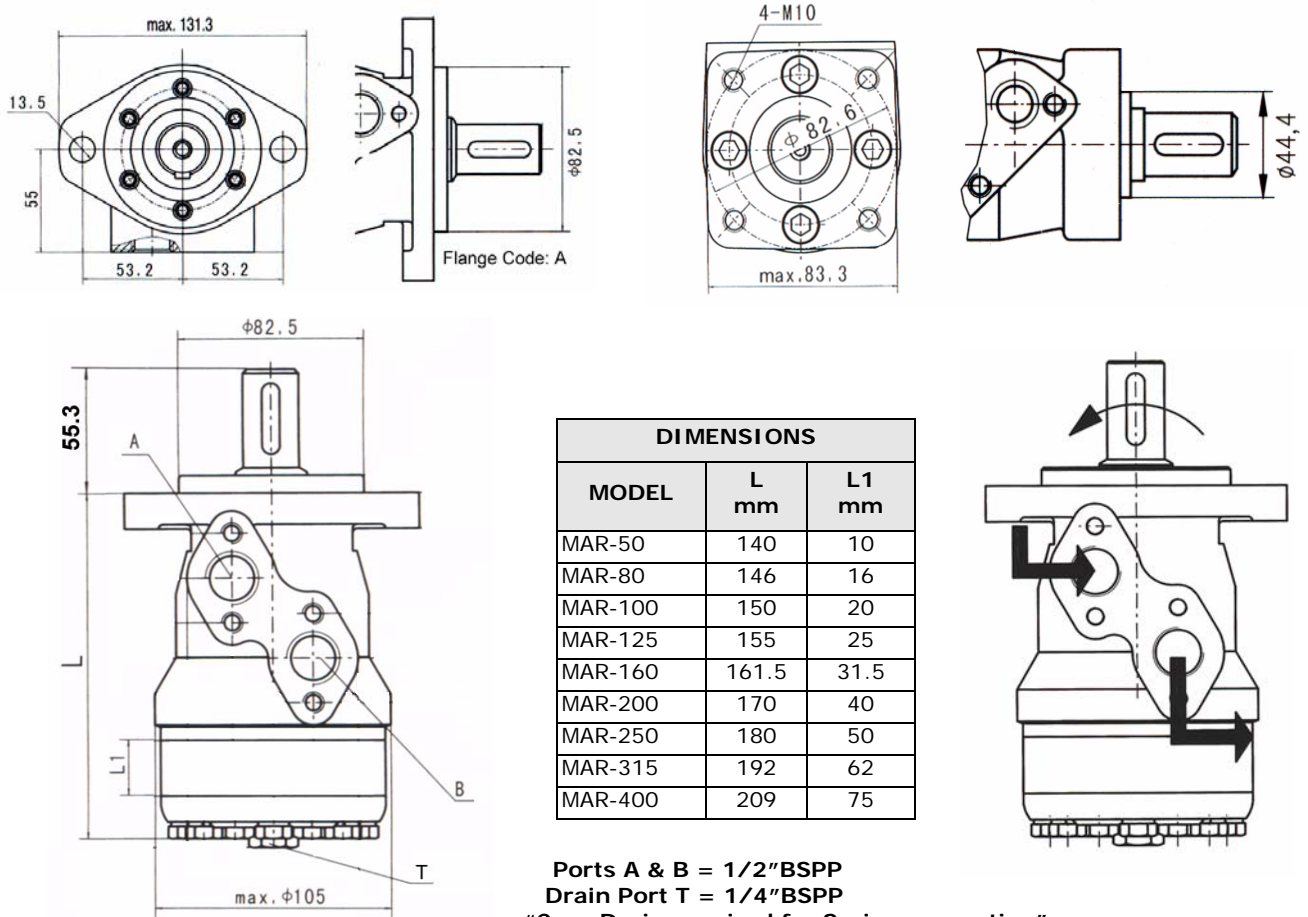
### SEAL KIT

MODEL	PRICE
SK-MAR	\$POA

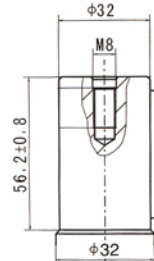
### PERFORMANCE FIGURES

MODEL	DISP CC/ REV	PRESSURE BAR		FLOW L/MIN		TORQUE				SPEED RPM		WEIGHT Kg
		CONT.	INT.	CONT.	INT.	NM		IN/LRS		CONT.	INT.	
						CONT.	INT.	CONT.	INT.			
MAR-50	51	140	175	40	50	97	114	857	1009	770	970	6.7
MAR-80	81	140	175	60	75	152	179	1348	1586	745	940	6.9
MAR-100	100	140	175	60	75	191	224	1688	1986	600	750	7.0
MAR-125	125	140	175	60	70	237	278	2095	2464	470	600	7.2
MAR-160	159	120	175	60	70	259	355	2288	3140	370	470	7.5
MAR-200	199	120	175	60	70	324	444	2865	3932	300	370	8.0
MAR-250	251	100	140	60	70	339	447	3003	3957	240	300	8.5
MAR-315	315	80	125	60	70	341	502	3021	4442	190	240	9.0
MAR-400	398	60	85	60	70	323	431	2860	3813	165	195	9.5

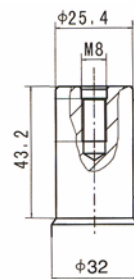
## MAR SERIES - GEROLOR TYPE



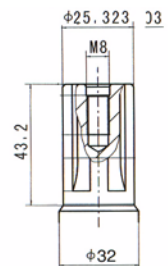
Shaft A: Cylindrical shaft  $\phi 25$   
 Parallel key 8x7x32  
 Shaft Code : C



Shaft B: Cylindrical shaft  $\phi 32$   
 Parallel key 10x8x45  
 Shaft Code : CB



Shaft C: Cylindrical shaft  $\phi 25.4$   
 Parallel key 6.35x6.35x31.75  
 Shaft Code : CO



Shaft E: Splined SAE 6B  
 Shaft Code : SH

- NB:
- 1/ Intermittent operation values may occur for Max 10% of every minute.
  - 2/ Intermittent speed and intermittent pressure may not occur at the same time.
  - 3/ Recommended filtration to **ISO 4406:1999 Cleanliness Code 19/17/14**.
  - 4/ Recommended operation temperature range is 20°C to 60°C with a max of 80°C for brief periods.
  - 5/ To assure optimum motor life, fill with fluid prior to loading and run for 15 mins at moderate load and speed.
  - 6/ The hydraulic fluid must be a Premium quality mineral based oil with anti wear additives.

## MAS SERIES - GEROLOR TYPE

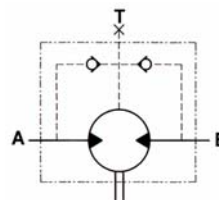


### Features:

The MAS Series are GEROLOR type 'Low Speed High Torque' Torq motors. They feature tapered roller bearings on the output shaft which permit high radial and axial loads. The advanced valving design minimizes cross port leakage resulting in high volumetric efficiency and constant output speeds at varying pressures.

These Torq motors are suitable for such applications as:

- Conveyor drives
- Winches
- Agricultural machinery
- Forestry machinery
- Cranes
- Sawmill equipment
- Elevators



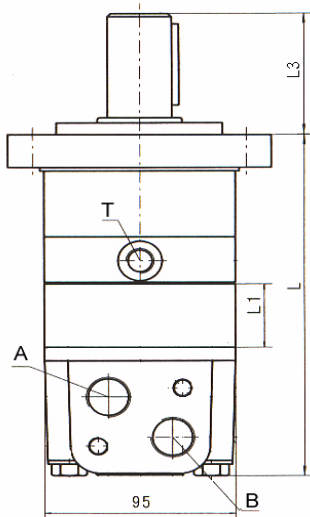
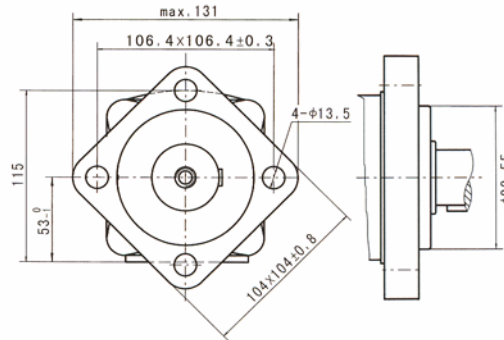
SAE 'A' 4 BOLT MOUNT/1-1/4" KEYED SHAFT	
MODEL	PRICE
MAS-80-A-CO	\$POA
MAS-100-A-CO	\$POA
MAS-125-A-CO	\$POA
MAS-160-A-CO	\$POA
MAS-200-A-CO	\$POA
MAS-250-A-CO	\$POA
MAS-315-A-CO	\$POA

SEAL KIT	
MODEL	PRICE
SK-MAS	\$POA

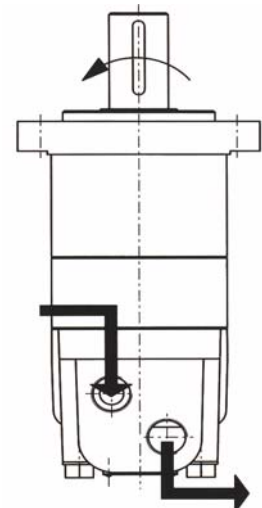
### PERFORMANCE FIGURES

MODEL	DISP CC/ REV	PRESSURE BAR		FLOW L/MIN		TORQUE				SPEED RPM		WEIGHT KG
		CONT.	INT.	CONT.	INT.	NM		IN/LBS		CONT.	INT.	
						CONT.	INT.	CONT.	INT.			
MAS-80	81	175	210	65	80	191	216	1691	1910	795	985	10
MAS-100	101	175	210	75	90	239	270	2112	2385	746	900	10.3
MAS-125	125	175	210	75	90	296	334	2621	2960	598	718	10.5
MAS-160	160	150	175	75	90	323	355	2862	3142	465	560	11
MAS-200	201	140	160	75	90	381	409	3369	3624	373	445	11.4
MAS-250	252	125	150	75	90	426	561	3772	4260	298	360	11.9
MAS-315	315	120	140	75	90	511	561	4523	4966	236	285	12.5

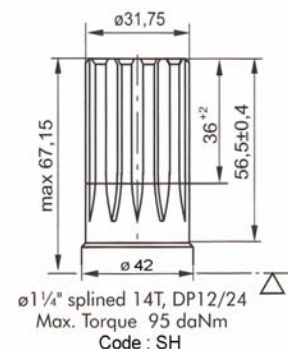
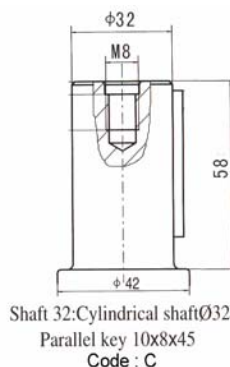
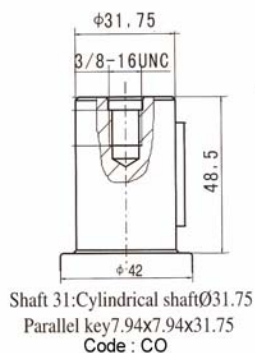
## MAS SERIES - GEROLOR TYPE



DIMENSIONS		
MODEL	L mm	L1 mm
MAS-50	186.5	16
MAS-80	186.5	20
MAS-100	190.5	25
MAS-125	195.5	31.5
MAS-160	202	40
MAS-200	212	50
MAS-250	224	62
MAS-315	240	78

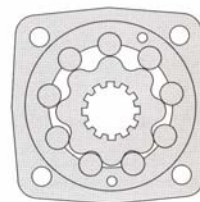
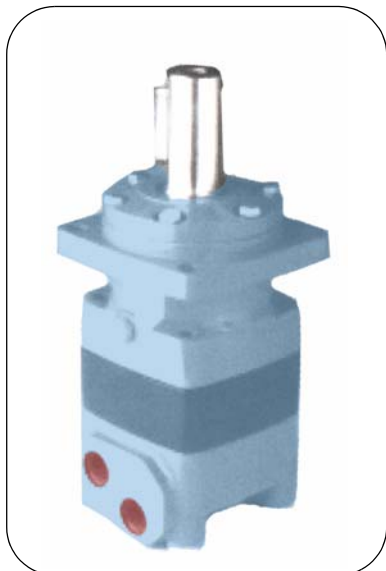


Ports A & B = 1/2"BSPP  
 Drain Port T = 1/4"BSPP  
 "Case Drain required for Series connection"



- NB:
- 1/ Intermittent operation values may occur for Max 10% of every minute.
  - 2/ Intermittent speed and intermittent pressure may not occur at the same time.
  - 3/ Recommended filtration to **ISO 4406:1999 Cleanliness Code 19/17/14**.
  - 4/ Recommended operation temperature range is 20°C to 60°C with a max of 80°C for brief periods.
  - 5/ To assure optimum motor life, fill with fluid prior to loading and run for 15 mins at moderate load and speed.
  - 6/ The hydraulic fluid must be a Premium quality mineral based oil with anti wear additives.

## MAT SERIES - GEROLOR TYPE

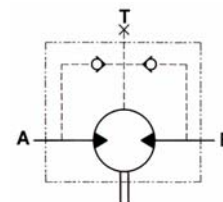


**Features:**

The MAT Series are GEROLOR type 'Low Speed High Torque' Tor qm o t o r s. They feature larger output shafts supported on tapered roller bearings for those more arduous applications.

These Tor qm o t o r s are suitable for such applications as:

- Conveyor drives
- Winches
- Agricultural machinery
- Forestry machinery
- Cranes
- Sawmill equipment
- Elevators



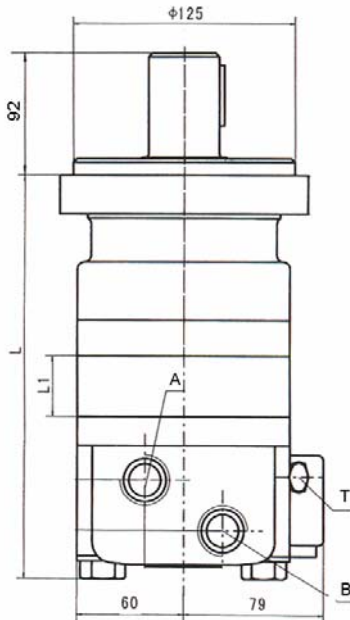
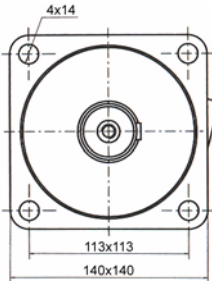
4 BOLT MOUNT 40mm KEYED SHAFT	
MODEL	PRICE
MAT-100-A-C	\$POA
MAT-125-A-C	\$POA
MAT-160-A-C	\$POA
MAT-200-A-C	\$POA
MAT-250-A-C	\$POA
MAT-315-A-C	\$POA
MAT-400-A-C	\$POA

SEAL KIT	
MODEL	PRICE
SK-MAT	\$POA

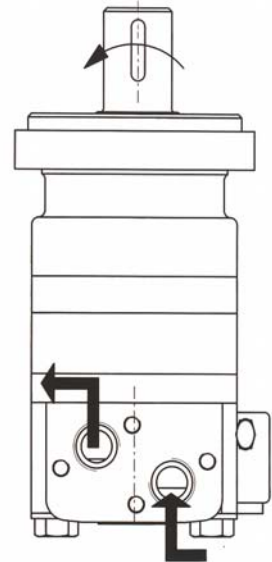
**PERFORMANCE FIGURES**

MODEL	DISP CC/ REV	PRESSURE BAR		FLOW L/MIN		TORQUE				SPEED RPM		WEIGHT KG
		CONT.	INT.	CONT.	INT.	NM		IN/LBS		CONT.	INT.	
						CONT.	INT.	CONT.	INT.			
MAT-100	102	210	250	70	85	275	310	2430	2745	700	850	18.2
MAT-125	125			80	100	338	381	2988	3374	655	810	18.6
MAT-160	162			100	120	438	495	3880	4382	620	750	18.8
MAT-200	201			115	140	544	614	4811	5433	572	695	19.3
MAT-250	250			115	140	677	764	5990	6765	460	560	19.7
MAT-315	320			115	140	777	853	6879	7553	360	442	19.9
MAT-400	402			115	140	950	1048	8410	9272	290	350	21.2

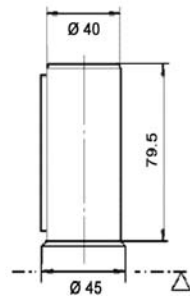
## MAT SERIES - GEROLOR TYPE



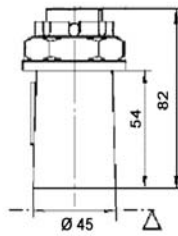
DIMENSIONS		
MODEL	L mm	L1 mm
MAT-100	217	13.5
MAT-125	215.5	17
MAT-160	219.5	21
MAT-200	225.5	27
MAT-250	223.5	34
MAT-315	231.5	42
MAT-400	243.5	54



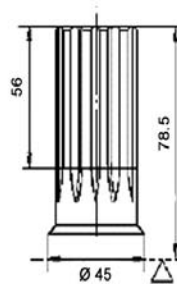
Ports A & B = 3/4"BSPP  
 Drain Port T = 1/4"BSPP  
 "Case Drain required for Series connection"



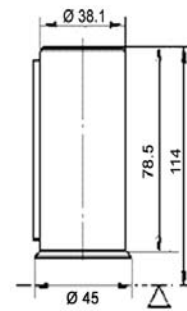
40 mm Parallel Key 12x8x70  
 Max. Torque 1328 Nm  
 CODE : C



Tapered 1:10, Parallel Key 12x8x28  
 Max. Torque 2107 Nm  
 CODE : K



Ø 1-1/2" Splined 17T, DP 12/24 ANSI  
 Max. Torque 1328 Nm  
 CODE : SH



Ø 1-1/2" Parallel Keyed 3/8"x3/8"x2-1/4"  
 Max. Torque 1328 Nm  
 CODE : CO

- NB:
- 1/ Intermittent operation values may occur for Max 10% of every minute.
  - 2/ Intermittent speed and intermittent pressure may not occur at the same time.
  - 3/ Recommended filtration to **ISO 4406:1999 Cleanliness Code 19/17/14**.
  - 4/ Recommended operation temperature range is 20°C to 60°C with a max of 80°C for brief periods.
  - 5/ To assure optimum motor life, fill with fluid prior to loading and run for 15 mins at moderate load and speed.
  - 6/ The hydraulic fluid must be a Premium quality mineral based oil with anti wear additives.

## MAV SERIES - GEROLOR TYPE

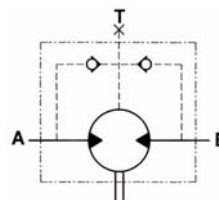


### Features:

The **MAV** Series are GEROLOR type 'Low Speed High Torque' Tor qm o t o r s. They feature heavy, robust construction for heavy duty industrial type applications.

These Tor qm o t o r s are suitable for such applications as:

- Conveyor drives
- Winches
- Agricultural machinery
- Forestry machinery
- Cranes
- Sawmill equipment
- Elevators



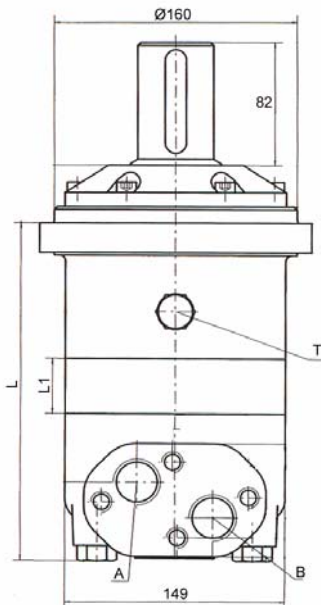
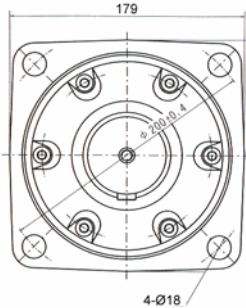
4 BOLT MOUNT 50mm KEYED SHAFT	
MODEL	PRICE
MAV-315-A-C	\$POA
MAV-400-A-C	\$POA
MAV-500-A-C	\$POA
MAV-630-A-C	\$POA
MAV-800-A-C	\$POA

SEAL KIT	
MODEL	PRICE
SK-MAV	\$POA

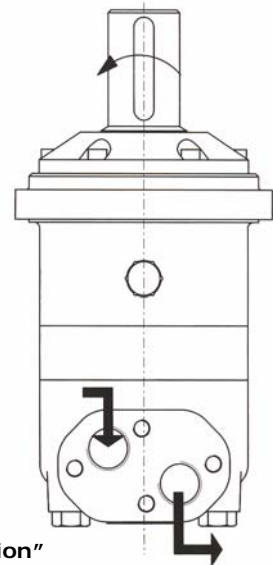
### PERFORMANCE FIGURES

MODEL	DISP CC/ REV	PRESSURE BAR		FLOW L/MIN		TORQUE				SPEED RPM		WEIGHT KG
		CONT.	INT.	CONT.	INT.	NM		IN/LBS		CONT.	INT.	
						CONT.	INT.	CONT.	INT.			
MAV-315	315	200	240	150	200	851	961	7533	8508	480	640	31.9
MAV-400	401	200	240	190	230	1084	1224	9593	10834	475	576	32.8
MAV-500	500	200	240	190	230	1350	1525	11949	13495	380	460	33.6
MAV-630	632	180	205	190	230	1537	1647	13602	14580	300	365	35.0
MAV-800	802	160	180	190	230	1734	1836	15346	16249	238	287	37.0

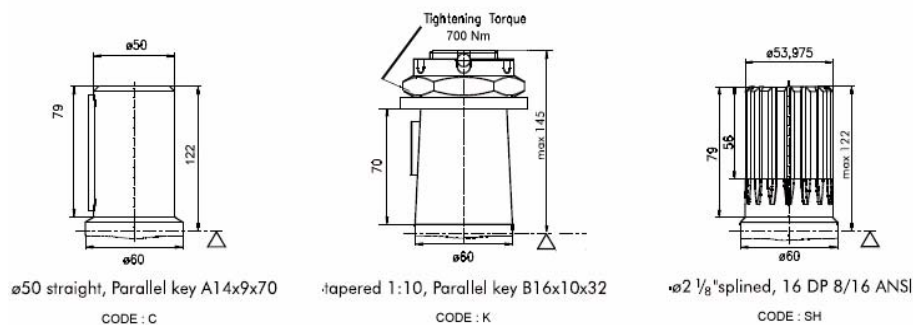
## MAV SERIES - GEROLOR TYPE



DIMENSIONS		
MODEL	L mm	L1 mm
MAV-315	203	22
MAV-400	210	29
MAV-500	218	37
MAV-630	230	49
MAV-800	241	60



Ports A & B = 1"BSPP  
 Drain Port T = 1/4"BSPP  
 "Case Drain required for Series connection"



ø50 straight, Parallel key A14x9x70  
 CODE : C

Tapered 1:10, Parallel key B16x10x32  
 CODE : K

ø53,975 splined, 16 DP 8/16 ANSI  
 CODE : SH

- NB:
- 1/ Intermittent operation values may occur for Max 10% of every minute.
  - 2/ Intermittent speed and intermittent pressure may not occur at the same time.
  - 3/ Recommended filtration to **ISO 4406:1999 Cleanliness Code 19/17/14**.
  - 4/ Recommended operation temperature range is 20°C to 60°C with a max of 80°C for brief periods.
  - 5/ To assure optimum motor life, fill with fluid prior to loading and run for 15 mins at moderate load and speed.
  - 6/ The hydraulic fluid must be a Premium quality mineral based oil with anti wear additives.

